

PACIFIC

Real Estate Services, Inc.

COMMERCIAL INVESTMENT REAL ESTATE

859 Willamette Street, Suite 270 Eugene, Oregon
www.PacificRealEstateServices.com 541.687.1434

Presented By:

Kristin Peterson, Principal Broker
Kristin@PacificRealEstateServices.com

Eric Jungjohann, Principal Broker
Eric@PacificRealEstateServices.com

OFFICE SPACE AVAILABLE
2,350 Square Feet, Suite 250

OFFICE or RETAIL AVAILABLE

1,570 Square Feet, 861 Willamette St.
2,085 Square Feet, 873 Willamette St.

Rate: \$1.45 per SqFt
("Modified Gross")

HIGH SPEED FIBER NOW AVAILABLE

FOR LEASE



PARK PLACE BUILDING at 859 Willamette Street

The Park Place Building is a pleasing blend of historic architectural styles enveloped in a modern office shell.

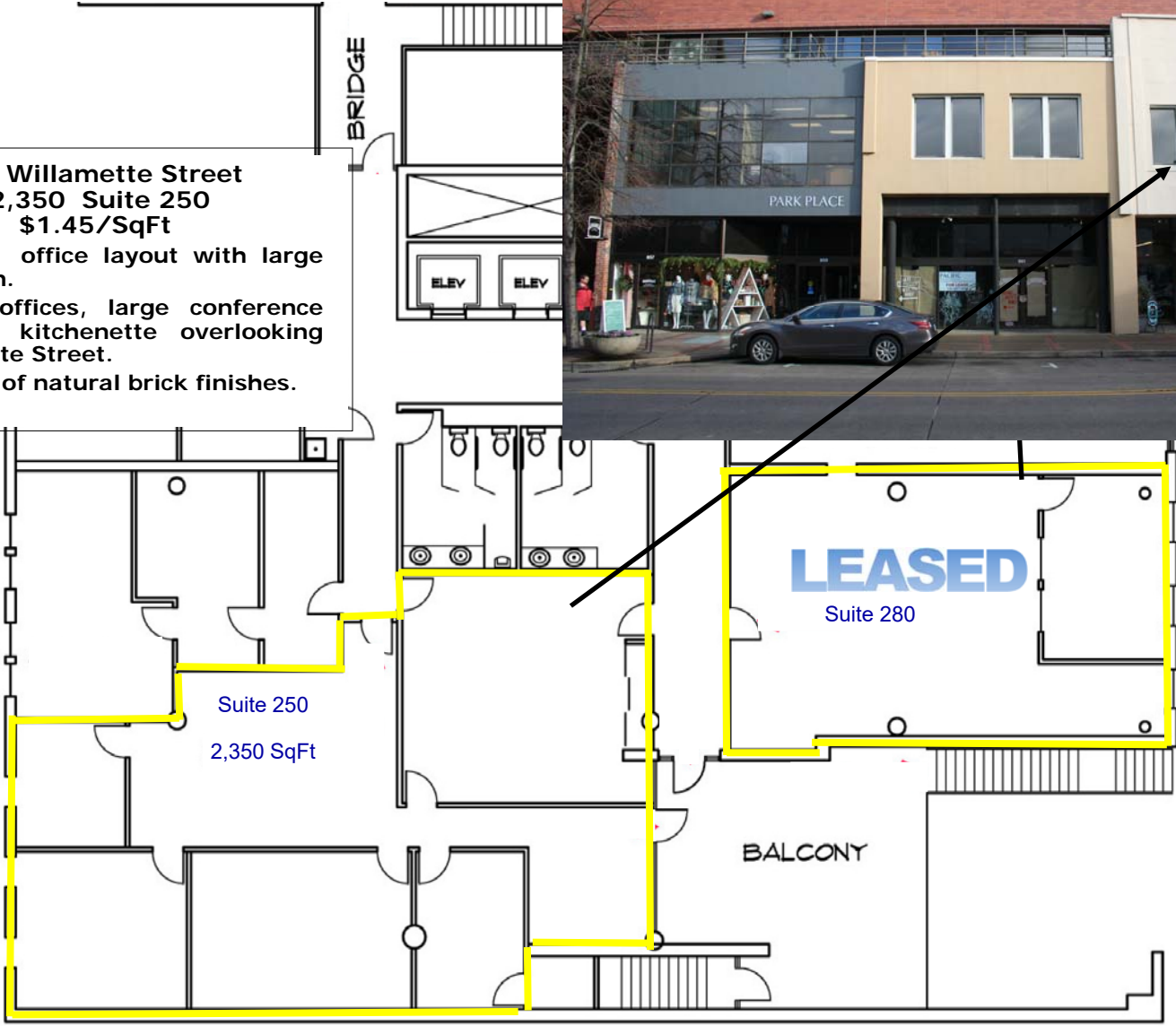
Comprised of nearly 62,000 square feet, the building offers a range of office and retail fronting both Willamette Street and the Park Blocks.

The Park Place Building presents a very appealing use of materials, with distinctive ground level facades creating an attract setting for retail and office.

Available Office Space - 2nd Floor Suite 250

**859 Willamette Street
2,350 Suite 250
\$1.45/SqFt**

- Efficient office layout with large reception.
- Private offices, large conference room & kitchenette overlooking Willamette Street.
- Nice use of natural brick finishes.



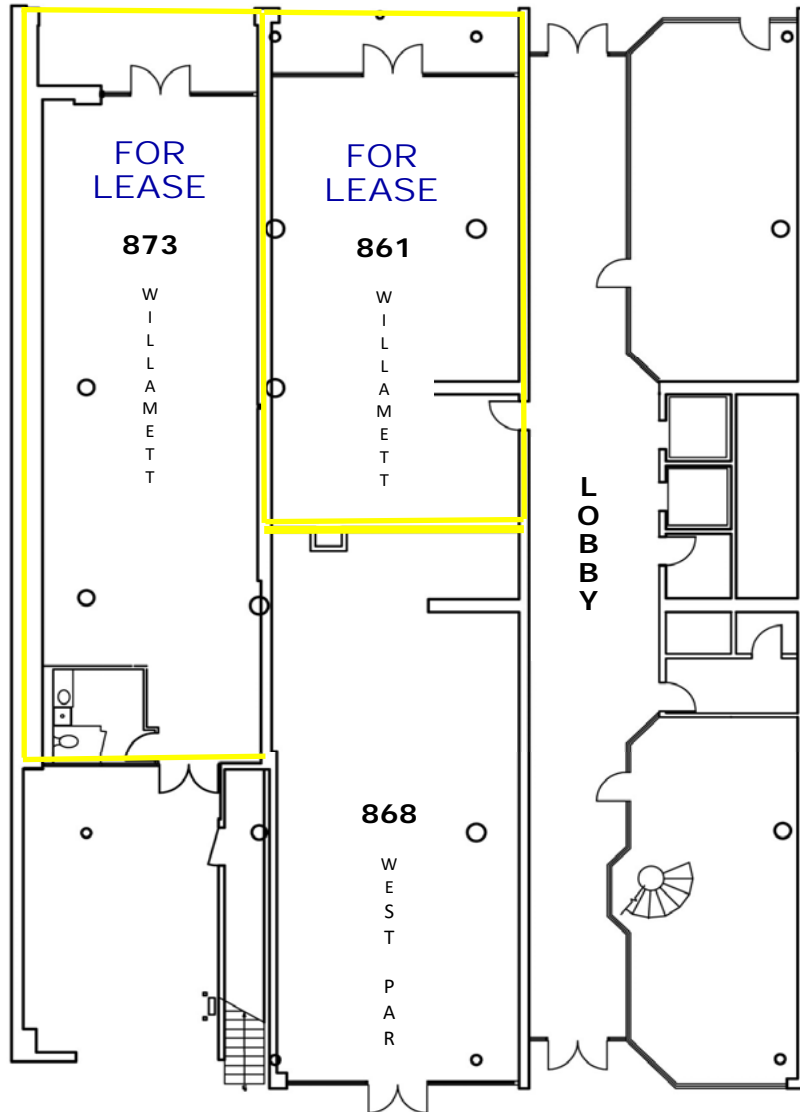
RETAIL SPACE - WILLAMETTE STREET

RETAIL AVAILABLE

1,570 Square Feet, 861 Willamette St.

2,085 Square Feet, 873 Willamette St.
(Available February 1st)

Rate: \$1.45 per SqFt
("Modified Gross")



860 W. Park Street