

PACIFIC

Real Estate Services, Inc.

COMMERCIAL INVESTMENT REAL ESTATE

Eric Jungjohann, Broker

132 E Broadway, Suite 800

Eugene, OR 97401

(541) 687-1434 Phone

(866) 796-1434 Toll Free

(541) 683-1811 fax

Eric@PacificRealEstateServices.com

THE PARK PLACE BUILDING

**859 Willamette Street
Downtown—Eugene**

The Park Place Building is a pleasing blend of historic architectural styles enveloped in a modern office shell.

Comprised of over 64,000 square feet, the building offers a range of office and retail opportunities fronting both Willamette Street and the Park Blocks.

An appealing use of materials and distinctive ground level facades creates an attract setting for retail and office.



OFFICE SPACE AVAILABLE

Details Page 2

627 Square Feet, Suite 340

1,146 Square Feet, Suite 330

3,191 Square Feet, Suite 310

Rate: \$1.35 per sqft Full Service

RETAIL AVAILABLE

Details Page 3

644 Sqft 857 Willamette Street

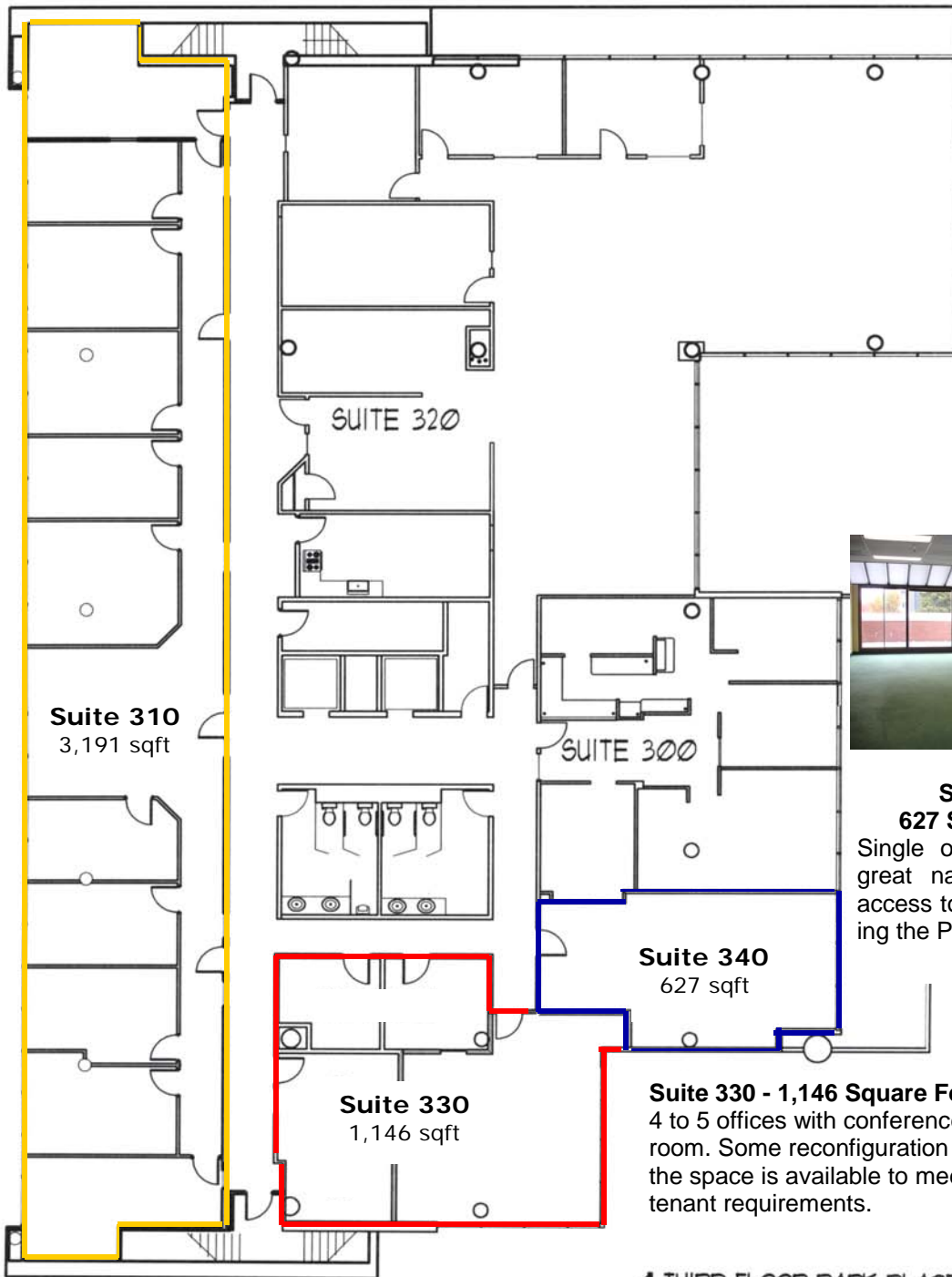
2,085 Sqft 873 Willamette Street

800 to 1,982 Sqft Park Street

Rate: \$1.35 per sqft plus utilities

Suite 310 - 3,191 Square Feet

10 large private offices, each with a full floor-to-ceiling glass window wall. All offices have access to the third floor patio running the full length of the building along Willamette Street. This is very nicely finished space with west views of downtown Eugene. Features a large reception and waiting area accessing the central elevator lobby.



Suite 310
3,191 sqft

SUITE 320

SUITE 300

Suite 330
1,146 sqft

Suite 340
627 sqft

Suite 330 - 1,146 Square Feet
4 to 5 offices with conference room. Some reconfiguration of the space is available to meet tenant requirements.



Suite 340
627 Square Feet

Single open office with great natural light and access to deck overlooking the Park Blocks.

**873 Willamette Street
2,084 Square Feet**

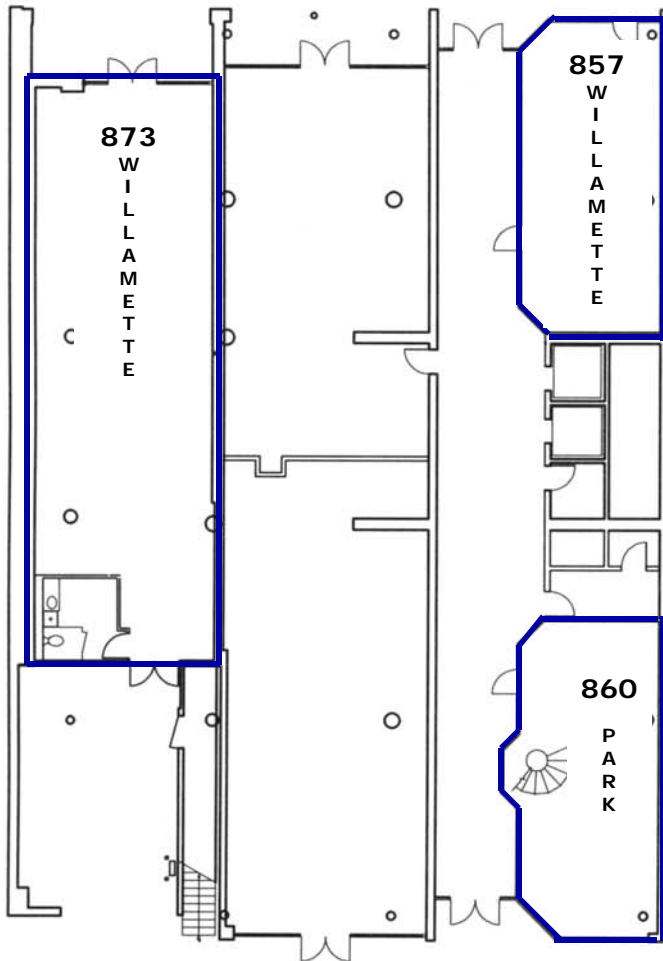
Highly visible retail space located in an active and attractive area of downtown. The space is located between Fenario Gallery and The Louie, across the street from Scan Design. Very usable space with high ceilings and natural brick finish.

Rate is \$1.35 per square foot plus utilities.

**857 Willamette Street
644 Square Feet**

This is a very efficient layout of space. Glass all around with entrances on Willamette Street and into the main building lobby. The space features high ceilings and tremendous display area along the perimeter.

Rate is \$1.35 per square foot plus utilities.



**857 Willamette Street
644 Square Feet**



**873 Willamette Street
2,085 Square Feet**



**860 Park Street
800 sqft to 1,982 sqft**

800 square feet on the ground floor with an additional 1,182 of office/studio space on the 2nd floor with access via a spiral staircase. Will lease separately. Excellent display space with all-around glass. Entrances to space both from exterior and to the building interior lobby.

Rate is \$1.35 per square foot plus utilities.